

iD **MIXONOMI**

LUXURY VINYL TILES

The  
art of  
mixing



reddot award 2017  
winner

 **Tarkett**

# COLOUR SHAPE MIX



**reddot award 2017**  
winner

Variety, expressiveness and creativity of this collection have been recognized by the prestigious international design award. Discover more on Tarkett's website

[www.professionals.tarkett.com](http://www.professionals.tarkett.com)

**MIXONOMI, feminine noun:**

*embodiment of a creative freedom where shapes and colours get combined and mix together through thematic harmonies.*

**Secondary meaning:** *invitation to a journey, from Stockholm to New Delhi, from London to Moscow, from the Western fringes to the Eastern rivers.*

**Synonymous:** *to imagine, to enjoy, to innovate, to compose.*

# 34 COLOURS

We travelled the world: the cosy Stockholm hotels, the gourmet Tuscany pastry shops, the perfumed Indian tea markets or the chic Savile Row tailors' shops.

We captured the colour souls and harmonies of these inspirational places and brought them alive.

Dare to stand out and use our 34 colours to create a new customer experience.

# 01



# 02

## SHAPES

The iD Mixonomi consists of two Series. The "Diamond series", inspired from the iconic Diamond, features 8 graphic shapes that can be fully combined together.

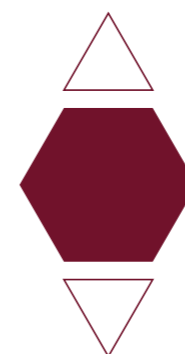
## 8 COMBINABLE SHAPES



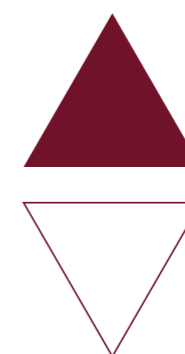
## THE DIAMOND SERIES



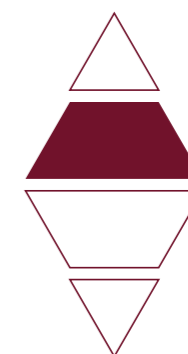
**Diamond Large**  
38.486 x 66.66 cm  
0.128272 m<sup>2</sup>



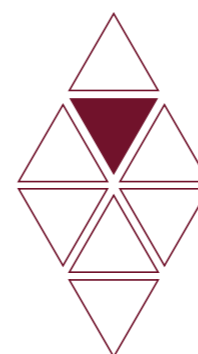
**Hexagone Large**  
33.33 x 38.486 cm  
0.096204 m<sup>2</sup>



**Triangle Large**  
38.486 cm/side  
0.004136 m<sup>2</sup>



**Trapeze**  
16.66 x 38.486 cm  
0.048102 m<sup>2</sup>



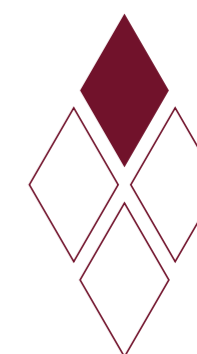
**Triangle Small**  
19.243 cm/side  
0.016034 m<sup>2</sup>



**Herringbone Left**  
8.33 x 38.486 cm  
0.032058 m<sup>2</sup>



**Herringbone Right**  
8.33 x 38.486 cm  
0.032058 m<sup>2</sup>



**Diamond Small**  
19.243 x 33.329 cm  
0.032068 m<sup>2</sup>

# 02

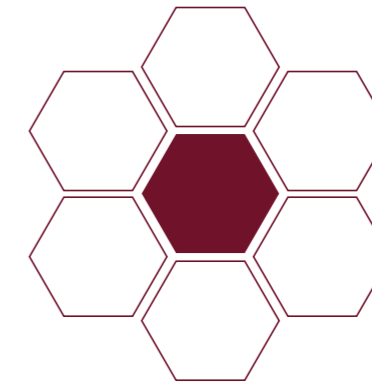
## SHAPES

The "Classic series" reveals 3 mini-shapes\* to compose classic layouts.

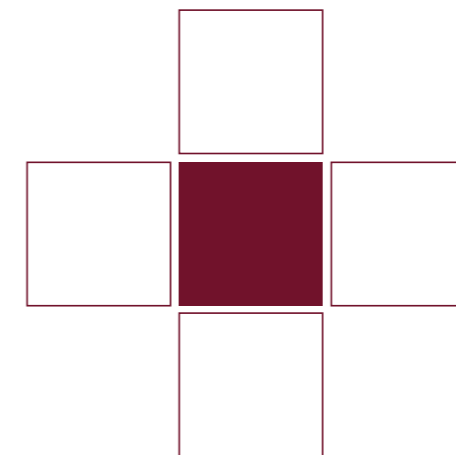
### 3 TRADITIONAL MINI-SHAPES FOR AN ALLOVER LOOK



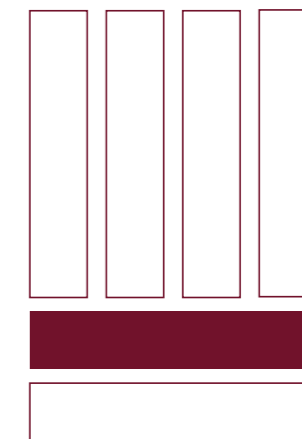
## THE CLASSIC SERIES



**Hexagone Small**  
20 x 23.094 cm  
0.0346 m<sup>2</sup>



**Square**  
25 x 25 cm  
0.0625 m<sup>2</sup>



**Rectangle**  
10 x 50 cm  
0.05 m<sup>2</sup>

\*These 3 shapes are not combinable with the 8 shapes from the Diamond series.

# 03

## MIX

From the mono-shape flooring layout to more elaborate compositions, you can easily mix and match multiple shapes and colours to build your own iD Mixonomi experience.

To get an idea of the various possibilities, you may access our Online Flooring Pattern Designer and simply follow the instructions.

**Step 1:** Select your recipe among our customization concepts

**Step 2:** Pick your colours

**Step 3:** Download your recipe and get full details for a 20 m<sup>2</sup> installation.

If you wish to extend your experience and go beyond our suggested recipes please contact your sales representative.\*

Also, loose samples are available upon request\*\* to get you started.

The iD Mixonomi collection can also be mixed with our iD Inspiration collections, iD Supernature and iD Tattoo.

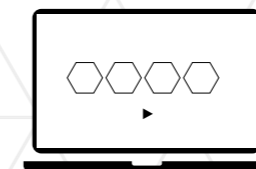
\*You may contact your sales representative for further information or if you wish to create a bespoke design with our Floorcraft service.

\*\*Please contact your sales representative to place an order for loose samples.

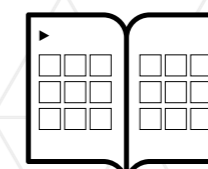
34 unique colours  
x 11 shapes =

**374** references  
& an infinite  
number of layouts

To support your  
creation process:



Online Flooring  
Pattern Designer



library of layouts



▶ [professionals.tarkett.com/idmixonomi](https://professionals.tarkett.com/idmixonomi)



## Colour Recipes

Conceived to nurture your inspiration and delight the senses, our colour harmonies reveal but a glimpse of the range of possibilities.



## Tender Pastels

Gourmand, fresh and cute. Soft ranges of greens, blues, pinks and yellows... inspired by pastry, sorbets, bonbons.



## Cosy Neutrals

Natural, calm and reassuring. Sophisticated range of off-whites, beiges, greys... inspired by natural materials such as chalk, wood, minerals and clay.



## Bold Primaries

Dynamic, vivid and eye-catching. Range of bright primaries: greens, blues and reds... inspired by sports and signage.



## Spicy Warms

Tasty, intense and exotic. Luxurious and solar range of yellows, oranges and browns... inspired by natural ochres, spices, leathers, chocolate and terracotta.



## Deep Darks

Luxurious, chic and masculine. Refined range of dark and intense greens, blues, reds and khakis... inspired by noble materials such as velvet, precious stones and dark woods.

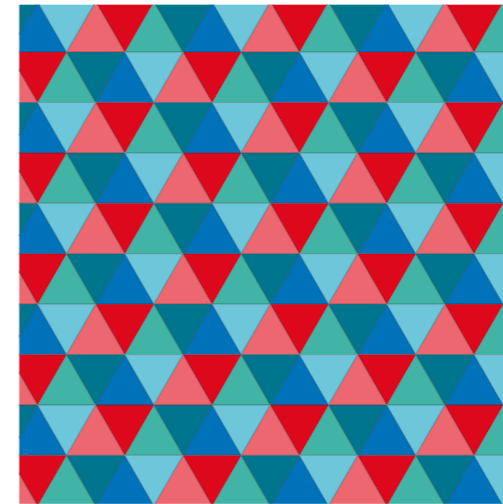
Get started  
“solo” with  
one shape



**Cosy neutrals / Spicy warms**  
Ivory, Craft, Chestnut, Ashes,  
Charcoal / Rosewood

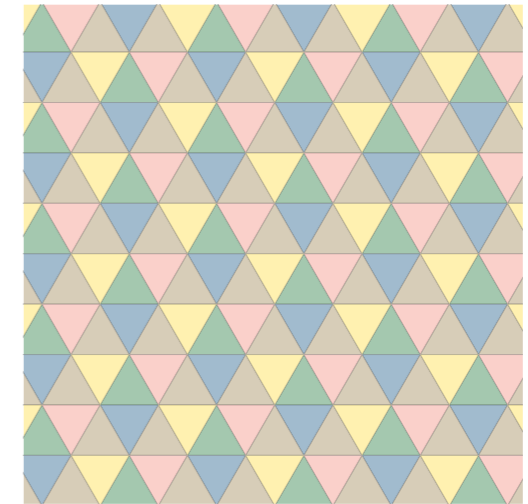
## Vintage Wheel

Also available in the 4 other colour harmonies



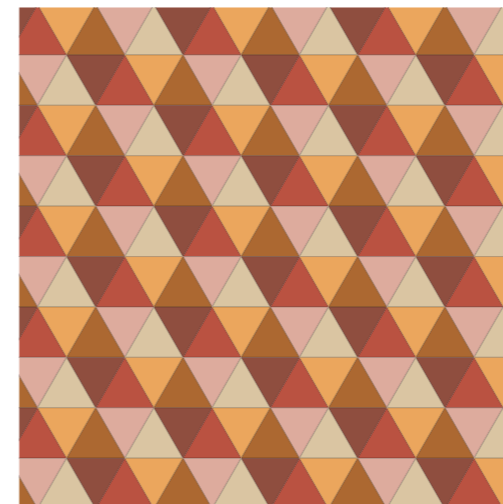
### **Bold primaries**

Strawberry, Poppy, Aqua, Cobalt, Jade, Peacock



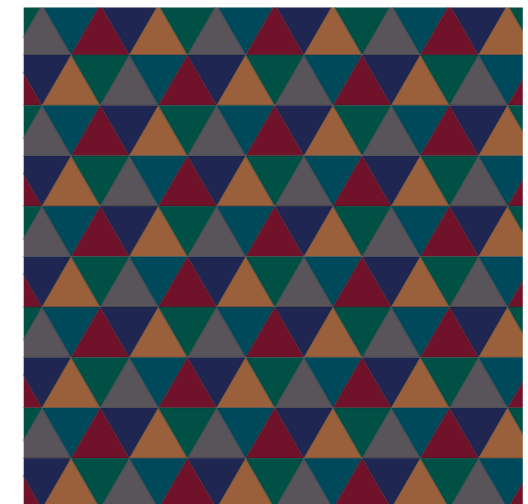
### **Tender pastels**

Banana, Drage, Capuccino, Mint, Forget Me Not



### **Spicy warms**

Dune, Rosewood, Colombo, Ochre, Terracotta, Kahlua



### **Deep darks**

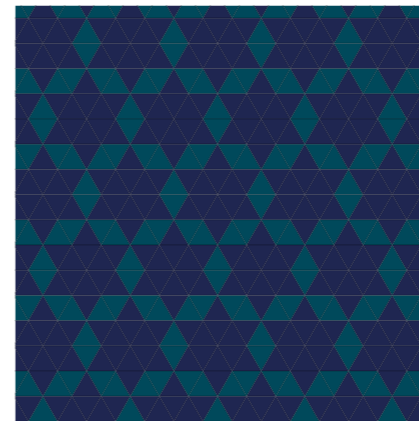
Emerald, Kensington Green, Liquorice, Prussian Blue,  
Tobacco, Burgundy



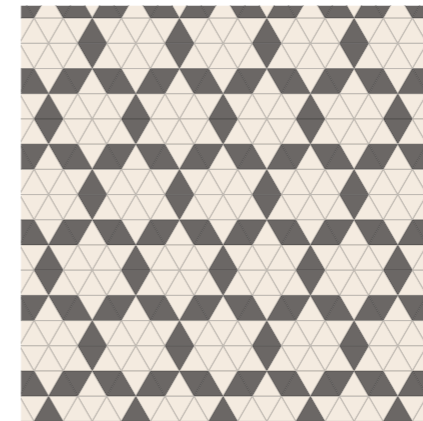


Tender pastels  
Banana, Mint

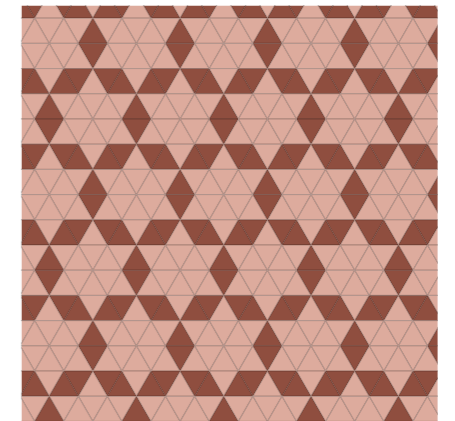
## Star



Deep darks  
Emerald, Prussian Blue

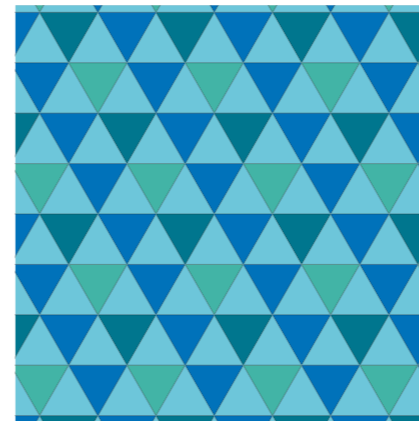


Cosy neutrals  
Ivory, Charcoal

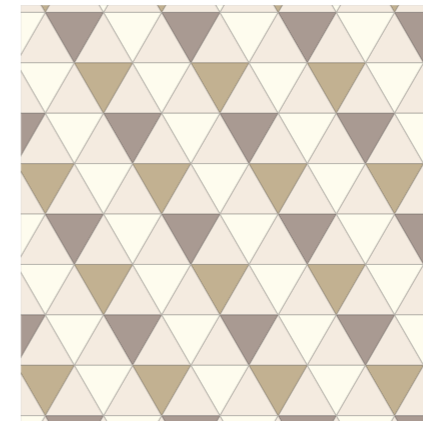


Spicy warms  
Rosewood, Kahlua

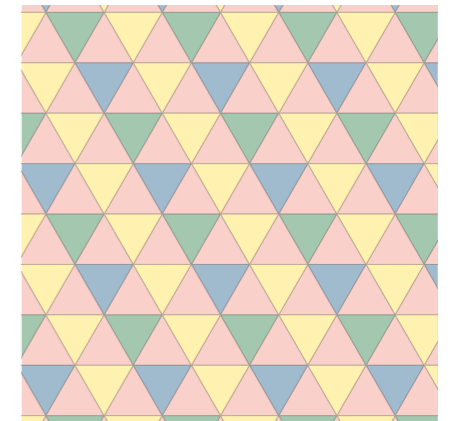
## Pennant



Bold primaries  
Aqua, Cobalt, Jade, Peacock

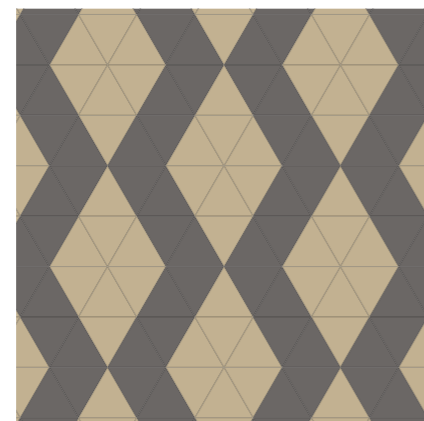


Cosy neutrals  
Milk, Ivory, Craft, Ashes

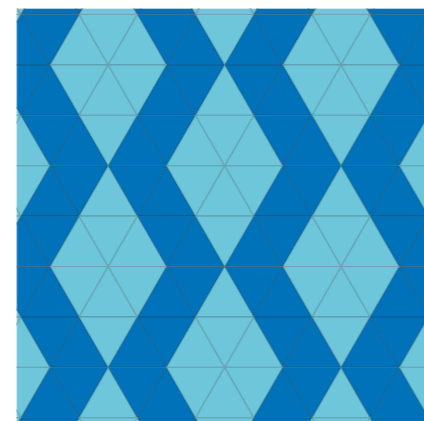


Tender Pastels  
Banana, Drage, Mint, Forget Me Not

## Diamond

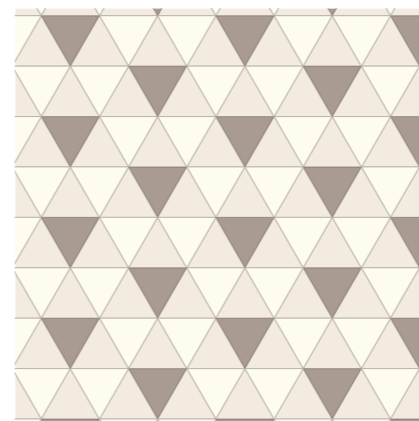


Cosy neutrals  
Craft, Charcoal

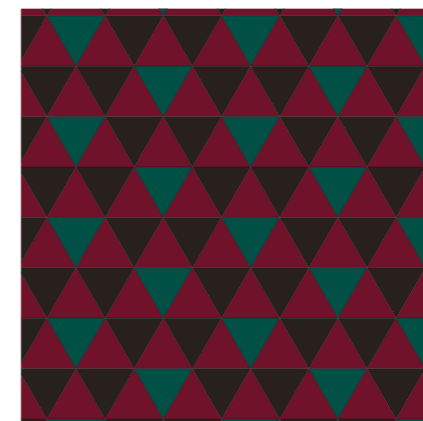


Bold primaries  
Aqua, Cobalt

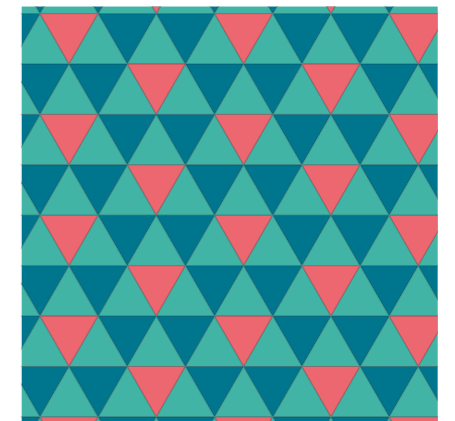
## Chandelier



Cosy neutrals  
Milk, Ivory, Ashes



Deep darks  
Burgundy, Kensington Green, Carbon

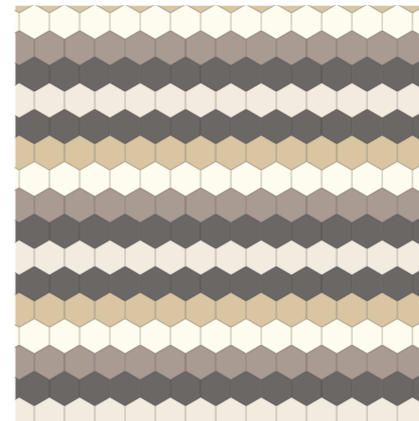


Bold primaries  
Aqua, Cobalt, Jade, Peacock

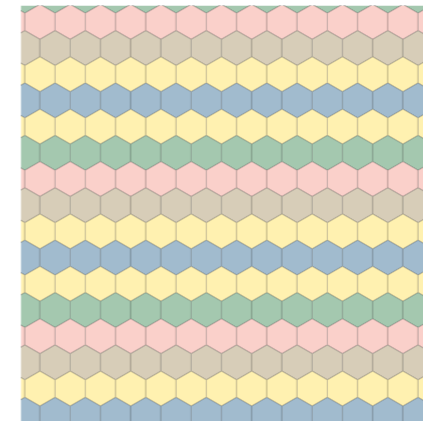


**Cosy neutrals**  
Charcoal, Ashes,  
Clay, Ivory

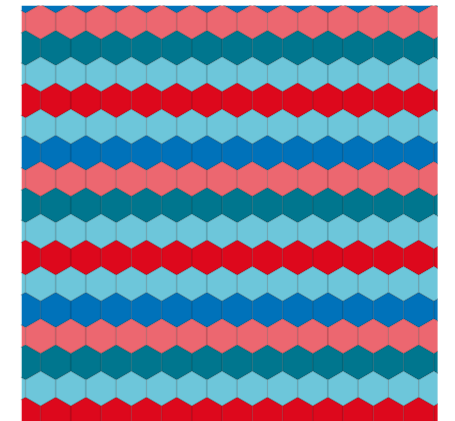
## Ski Sock



**Cosy neutrals**  
Milk, Ivory, Craft, Ashes, Charcoal

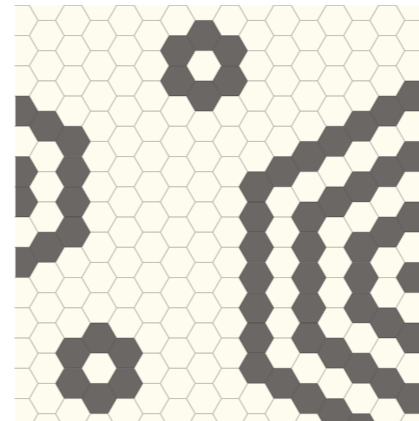


**Tender pastels**  
Banana, Drage, Capuccino, Mint, Forget Me Not

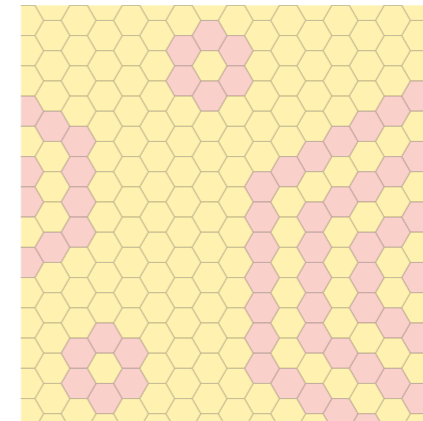


**Bold primaries**  
Strawberry, Poppy, Aqua, Cobalt, Peacock

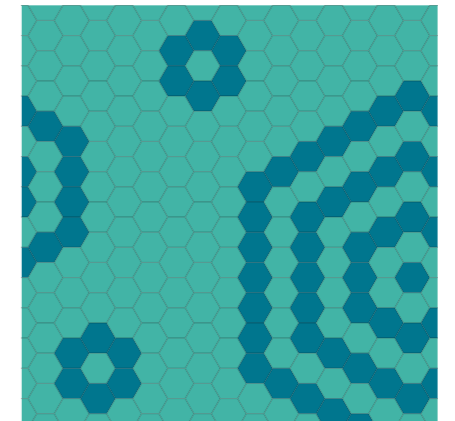
## Daisy



**Cosy neutrals**  
Milk, Charcoal

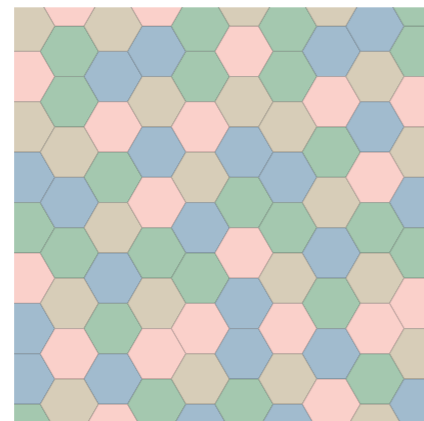


**Tender pastels**  
Banana, Drage

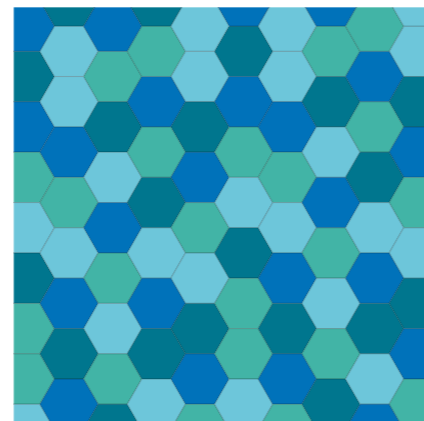


**Bold primaries**  
Jade, Peacock

## Tomette Paradise

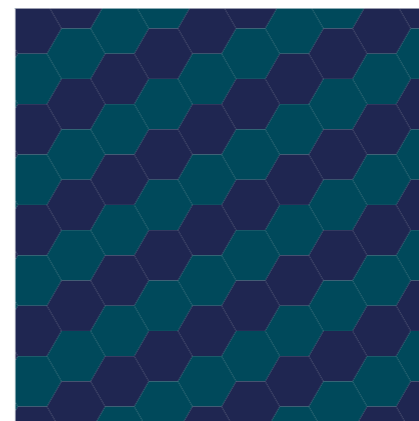


**Tender pastels**  
Drage, Capuccino, Mint, Forget Me Not

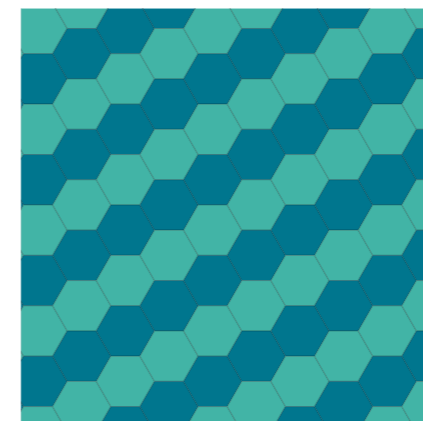


**Bold primaries**  
Aqua, Cobalt, Jade, Peacock

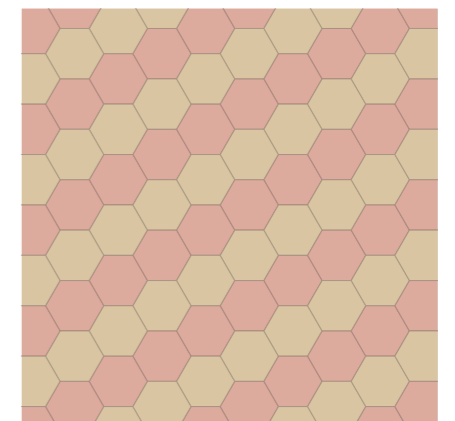
## Sweet tomette



**Deep Darks**  
Emerald, Prussian Blue



**Bold primaries**  
Jade, Peacock

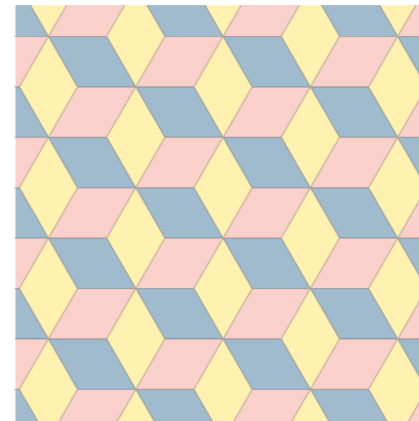


**Spicy Warms**  
Dune, Rosewood

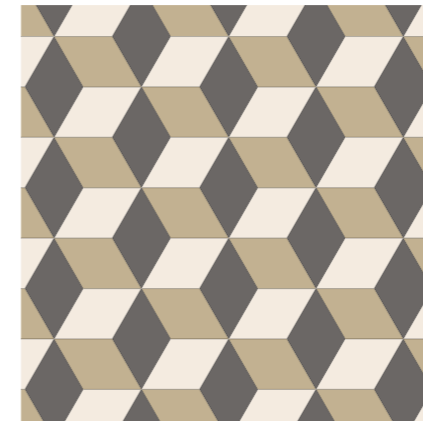


**Deep darks**  
Liquorice, Prussian Blue

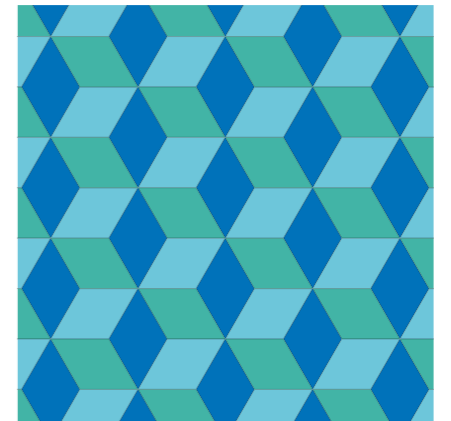
## Squared



**Tender pastels**  
Banana, Drage, Forget Me Not



**Cosy neutrals**  
Ivory, Craft, Charcoal



**Bold primaries**  
Aqua, Cobalt, Jade

## Wine



**Tender pastels**  
Drage, Mint

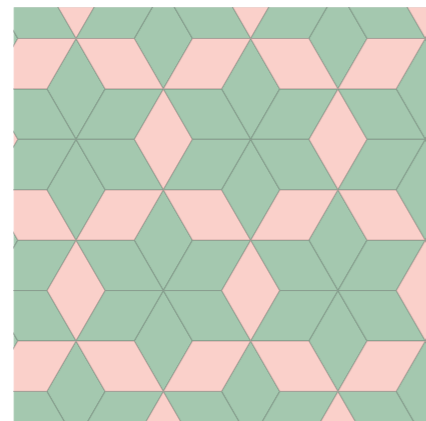


**Cosy neutrals**  
Milk, Clay

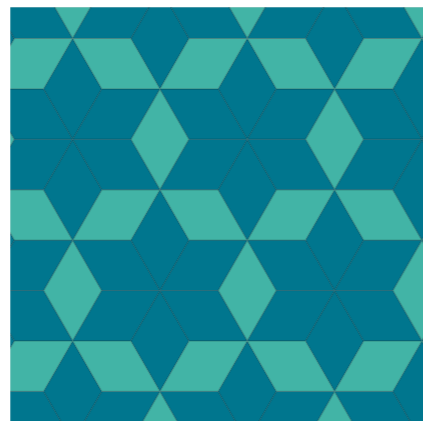


**Bold primaries**  
Poppy, Peacock

## Nova



**Tender Pastels**  
Drage, Mint



**Bold Primaries**  
Jase, Peacock

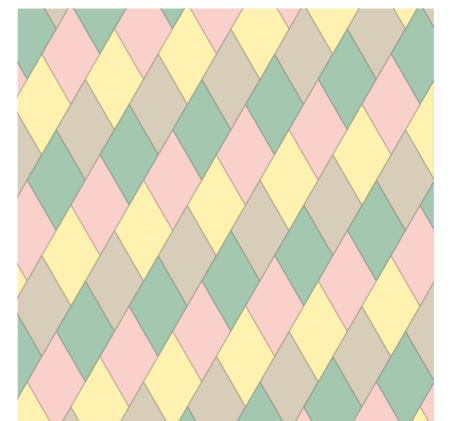
## Marshmallow



**Spicy Warms**  
Dune, Rosewood, Terracotta, Kahlua



**Cosy neutrals**  
Ivory, Clay, Ashes, Charcoal

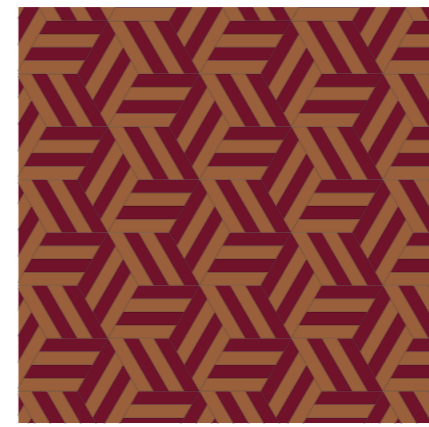


**Tender pastels**  
Banana, Drage, Mint



**Bold primaries / Cosy neutrals**  
Cobalt, Burgundy, Poppy / Milk

## Wooden Twist



**Deep darks**  
Tobacco, Burgundy

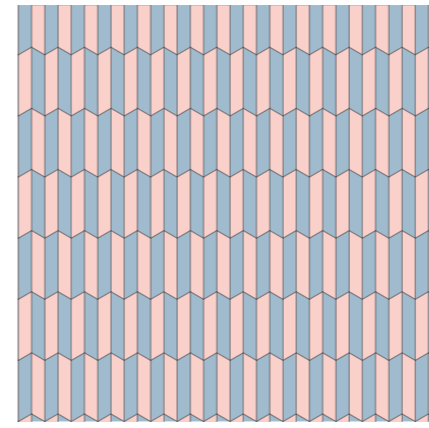


**Bold Primaries**  
Jade, Peacock

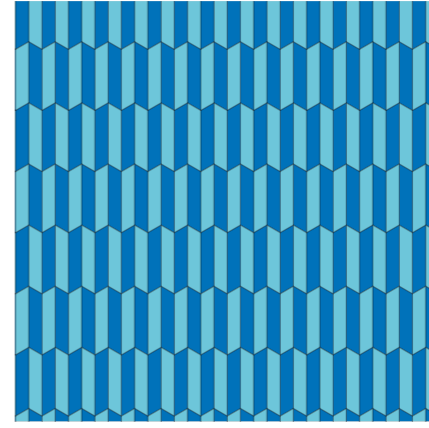


**Cosy neutrals**  
Ivory, Charcoal

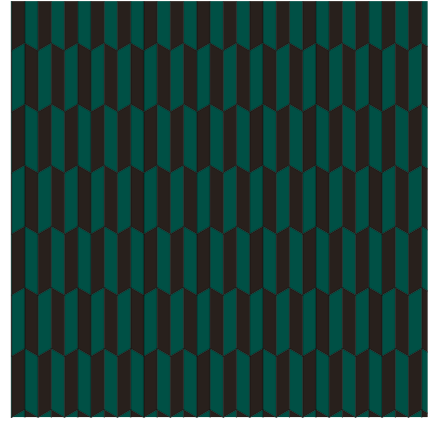
## Interplay



**Tender pastels**  
Drage, Forget Me Not



**Bold primaries**  
Aqua, Cobalt



**Deep darks**  
Kensington Green, Carbon

## Funky Herringbone

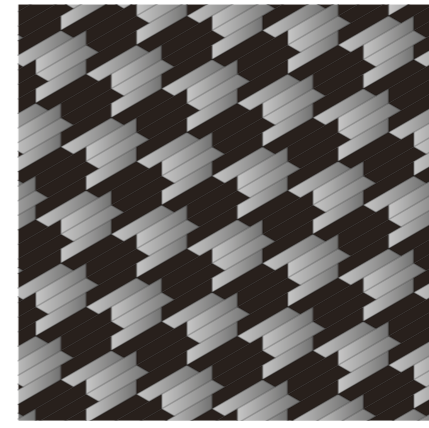


**Tender pastels**  
Banana, Drage, Capuccino, Mint

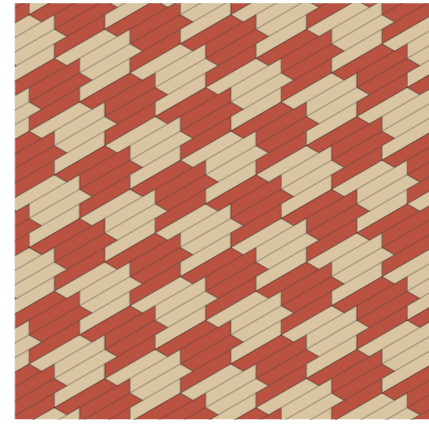


**Spicy warms**  
Dune, Rosewood, Terracotta, Kahlua

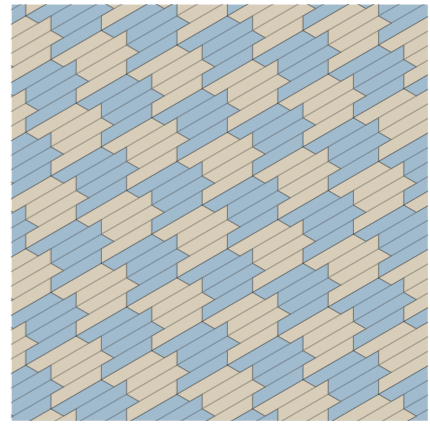
## Houndstooth



**Deep darks & Metal**  
Carbon / Silver



**Spicy warms**  
Dune, Terracotta

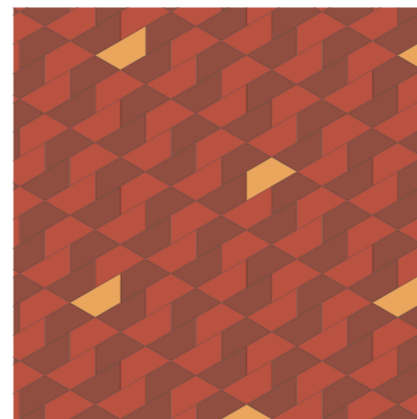


**Tender pastels**  
Capuccino, Forget Me Not



**Tender pastels / Spicy warms**  
Capuccino / Colombo

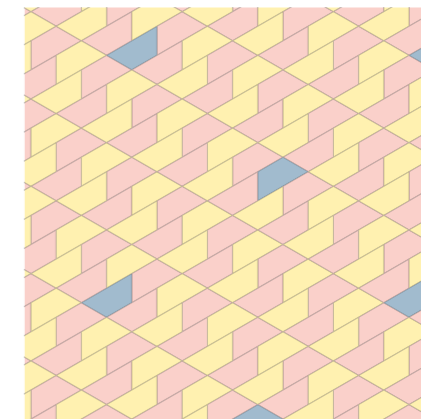
## Cockerel



**Spicy warms**  
Colombo, Terracotta, Kahlua

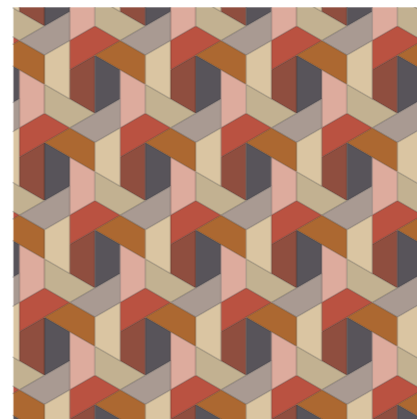


**Cosy neutrals**  
Milk, Craft, Charcoal



**Tender pastels**  
Banana, Drage, Forget Me Not

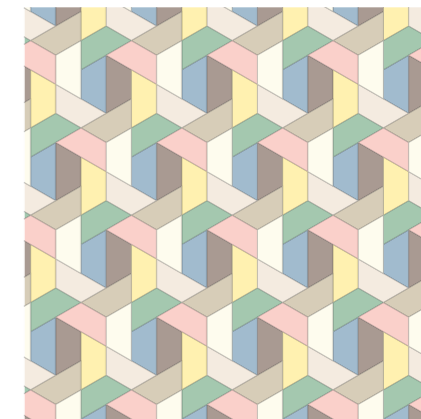
## Wool Knit



**Spicy warms / Cosy neutrals**  
Dune, Rosewood, Ochre, Terracotta, Kahlua,  
/ Craft, Ashes, Charcoal

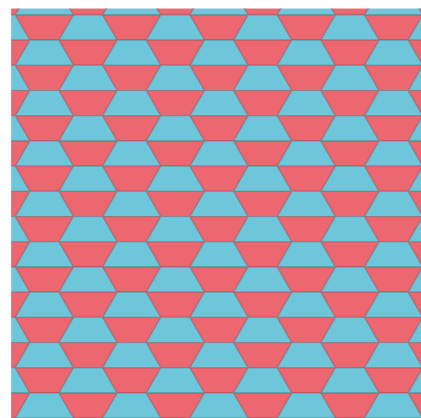


**Cosy neutrals / Deep darks**  
Milk, Ivory, Craft, Clay, Chestnut, Ashes,  
Charcoal / Liquorice

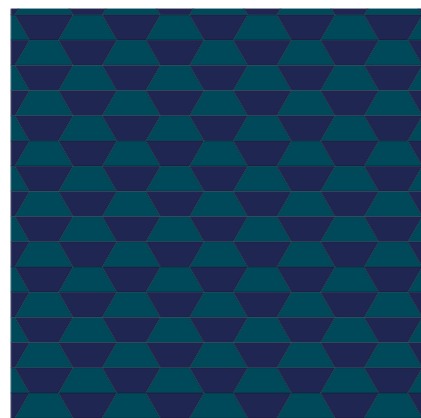


**Tender pastels / Cosy neutrals**  
Banana, Drage, Capuccino, Mint,  
Forget Me Not / Milk, Ivory, Ashes

## Precious

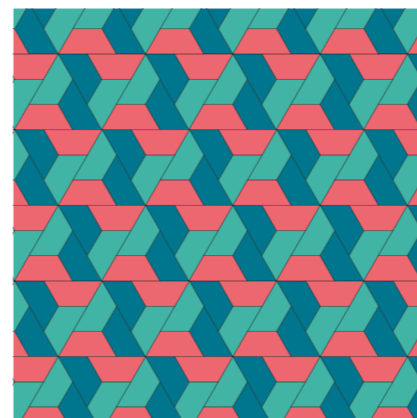


**Bold primaries**  
Poppy, Aqua

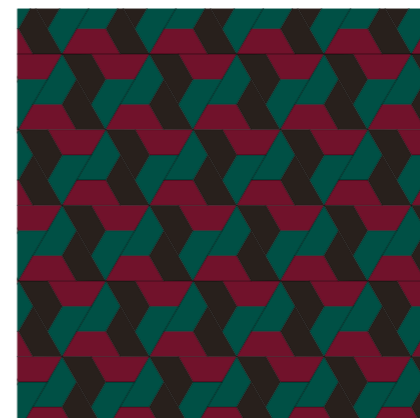


**Deep darks**  
Emerald, Prussian blue

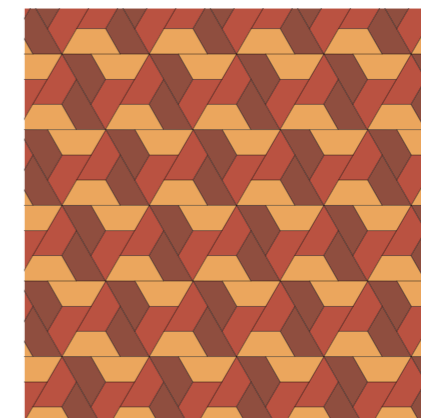
## Crochet



**Bold primaries**  
Poppy, Jade, Peacock



**Deep darks**  
Kensington Green, Burgundy, Carbon

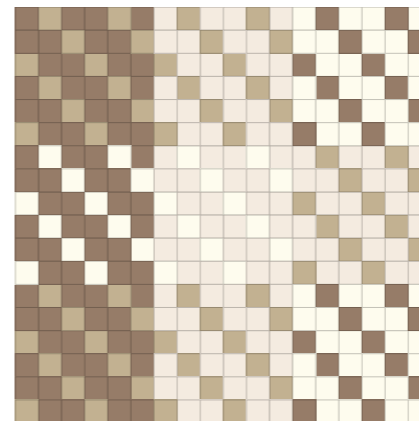


**Spicy warms**  
Colombo, Terracotta, Kahlua

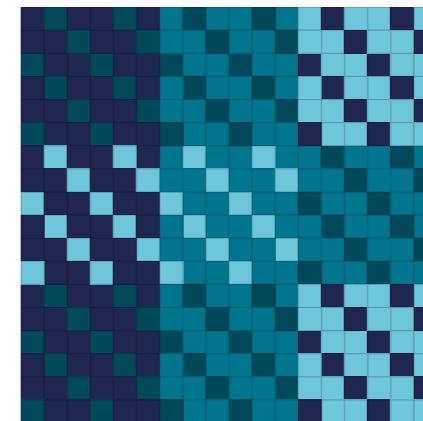


**Tender Pastels**  
Drage, Capuccino

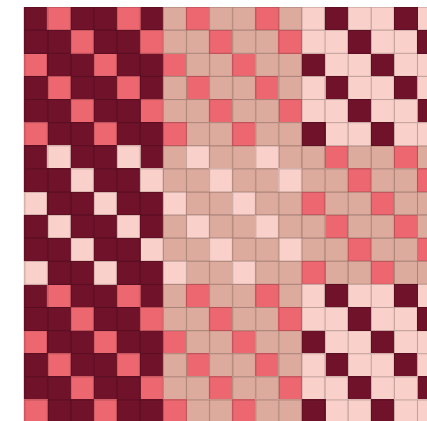
## Leather



**Cosy neutrals**  
Milk, Ivory, Craft, Clay

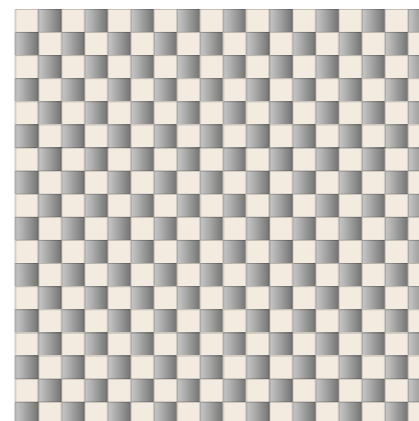


**Bold primaries / Deep darks**  
Aqua, Peacock / Emerald, Prussian Blue

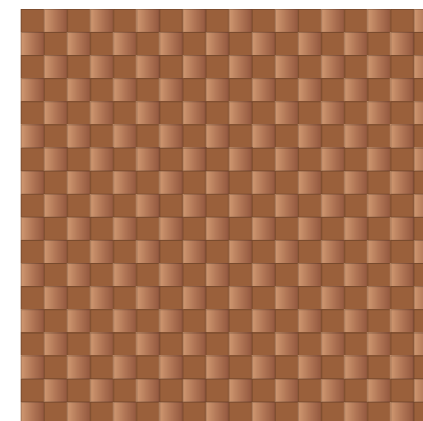


**Tender pastels / Spicy warms / Deep darks / Bold primaries**  
Drage / Rosewood / Burgundy / Poppy

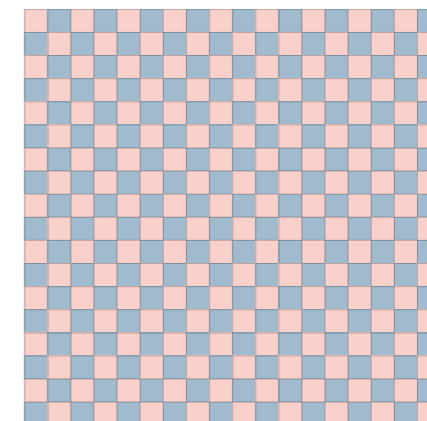
## Checkerboard



**Cosy neutrals & Metal**  
Milk / Silver

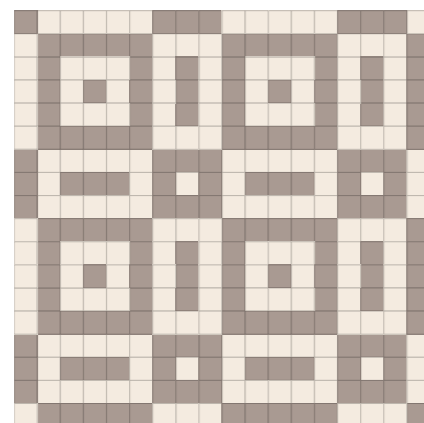


**Deep darks & Metal**  
Tobacco/ Copper

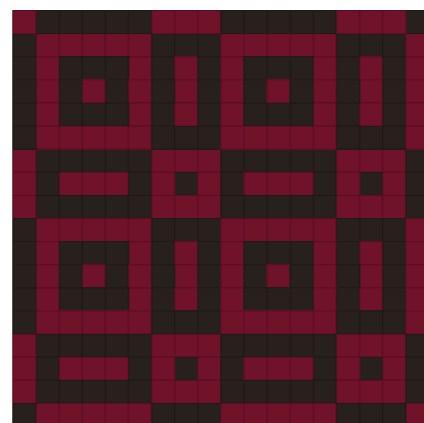


**Tender pastels**  
Drage, Forget Me Not

## Mozaic

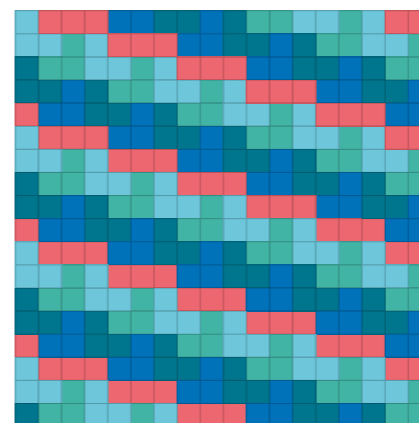


**Cosy neutrals**  
Ivory, Ashes

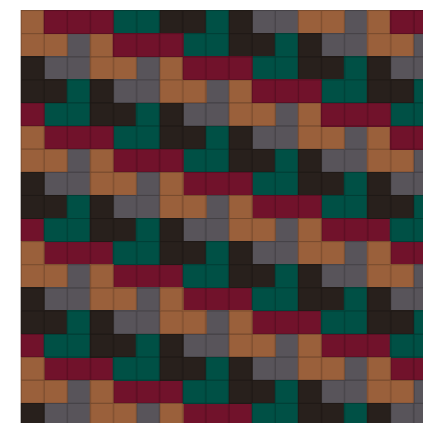


**Deep darks**  
Burgundy, Carbon

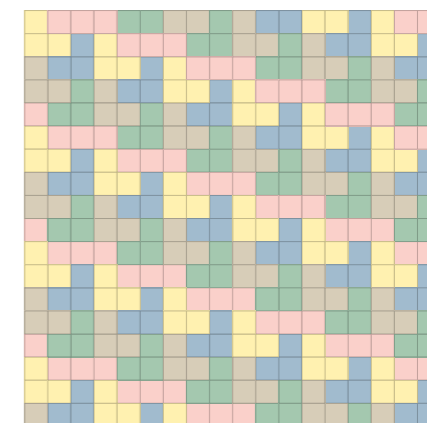
## Video games



**Bold primaries**  
Poppy, Aqua, Cobalt, Jade, Peacock



**Deep darks**  
Kensington Green, Liquorice, Tobacco, Burgundy, Carbon

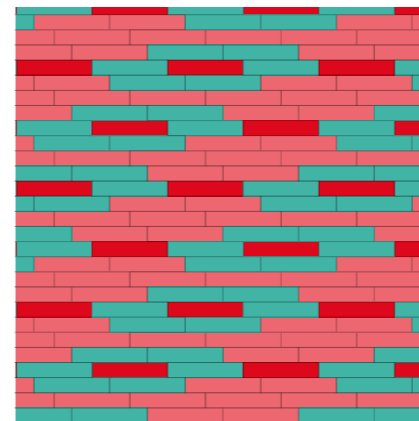


**Tender Pastels**  
Banana, Drage, Capuccino, Mint, Forget Me Not

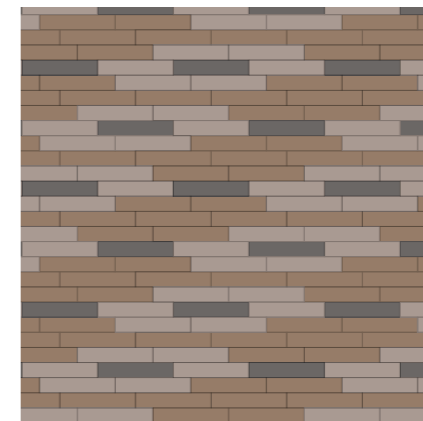


**Deep darks**  
Kensington Green, Prussian Blue,  
Burgundy, Carbon

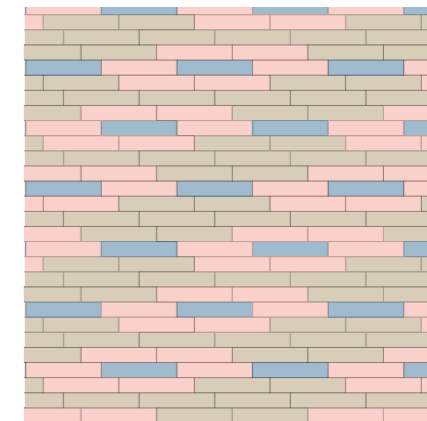
## Pixel



**Bold primaries**  
Strawberry, Poppy, Jade

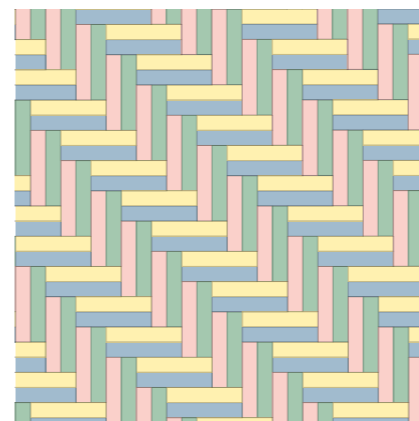


**Cosy neutrals**  
Clay, Ashes, Charcoal



**Tender pastels**  
Drage, Capuccino, Forget Me Not

## Stitches



**Tender pastels**  
Banana, Drage, Mint, Forget Me Not

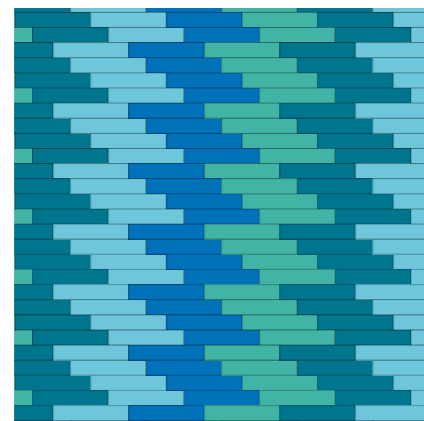


**Cosy neutrals**  
Milk, Ivory, Clay, Ashes

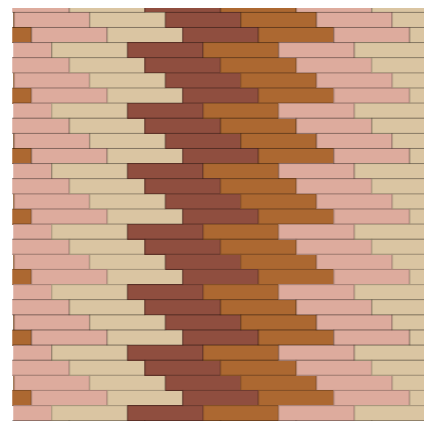


**Spicy Warm**s  
Dune, Rosewood, Ochre, Terracotta

## Backgammon



**Bold Primaries**  
Aqua, Cobalt, Jade, Peacock

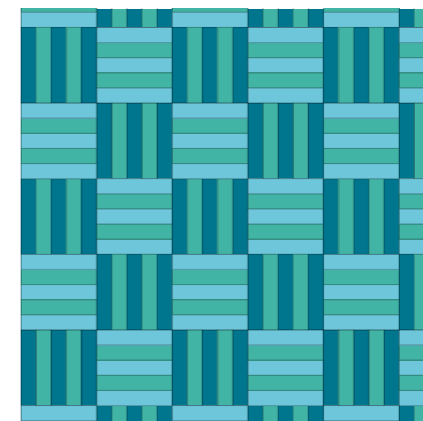


**Spicy Warm**s  
Dune, Rosewood, Ochre, Kahlua

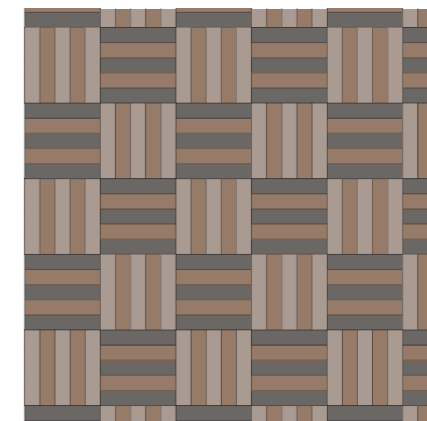
## Basketweave



**Deep darks**  
Emerald, Liquorice, Prussian Blue



**Bold primaries**  
Aqua, Jade, Peacock



**Cosy neutrals**  
Clay, Ashes, Charcoal

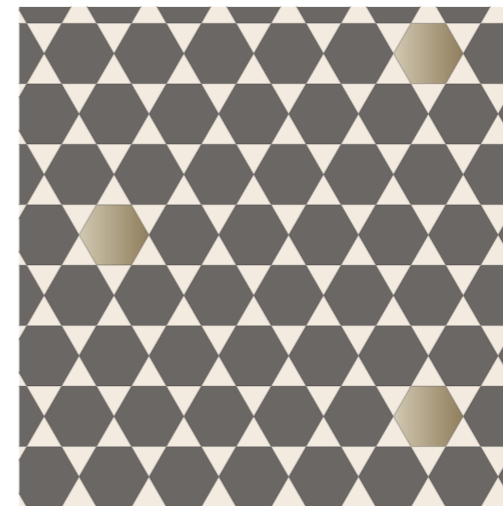
Keep up the tempo with the “Duo” option



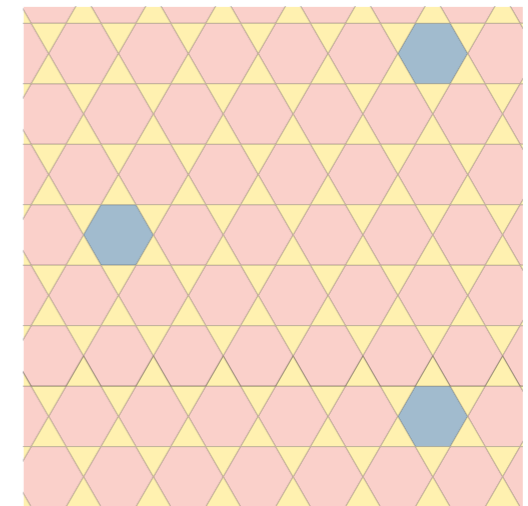
**Deep darks & Metal**  
*Prussian Blue, Burgundy, Brass*

## Dark Velvet

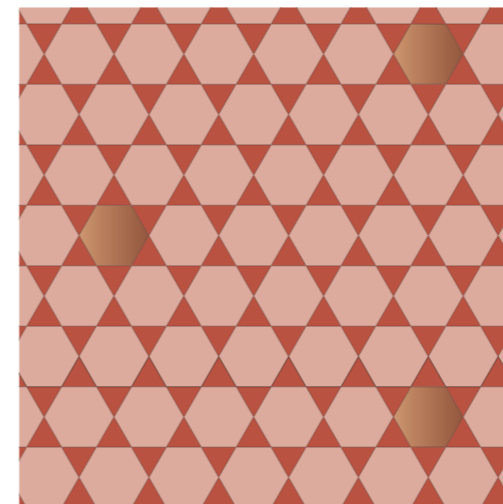
Also available in the 4 other colour harmonies



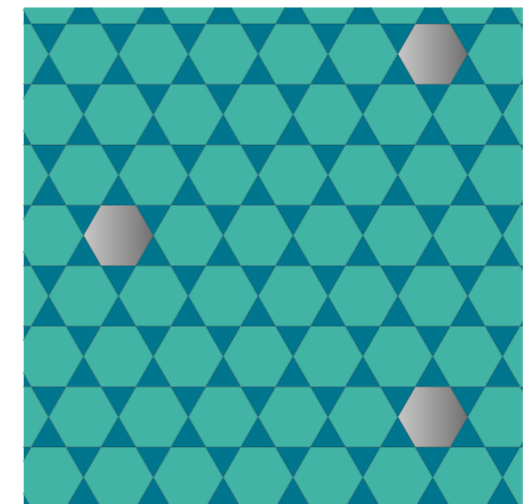
**Cosy neutrals & Metal**  
*Ivory, Charcoal, Brass*



**Tender pastels**  
*Banana, Drage, Forget Me Not*



**Spicy warms & Metal**  
*Rosewood, Terracotta, Copper*



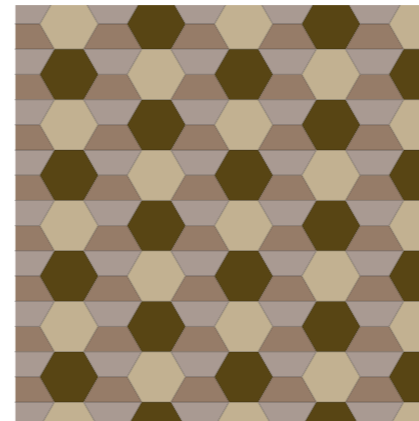
**Bold primaries & Metal**  
*Jade, Peacock, Silver*



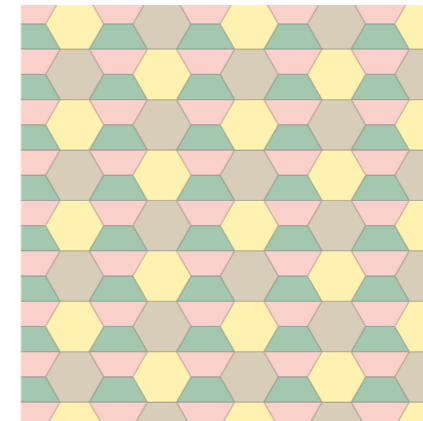


**Spicy warms**  
Rosewood, Terracotta, Kahlua

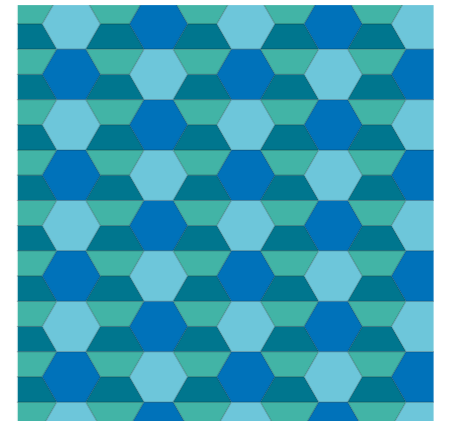
**Jade** 



**Cozy neutrals**  
Craft, Clay, Chestnut, Ashes

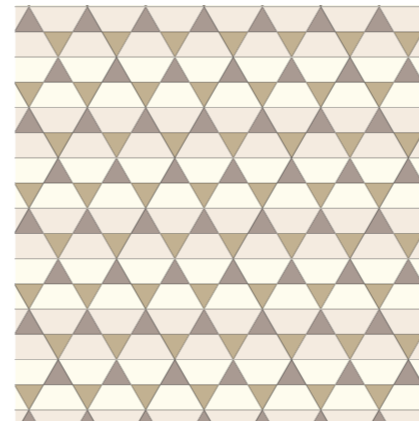


**Tender pastels**  
Banana, Drage, Capuccino, Mint

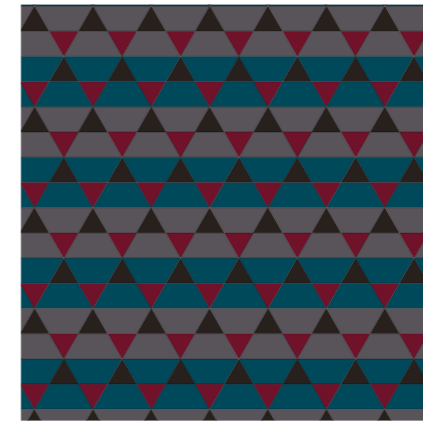


**Bold primaries**  
Aqua, Cobalt, Jade, Peacock

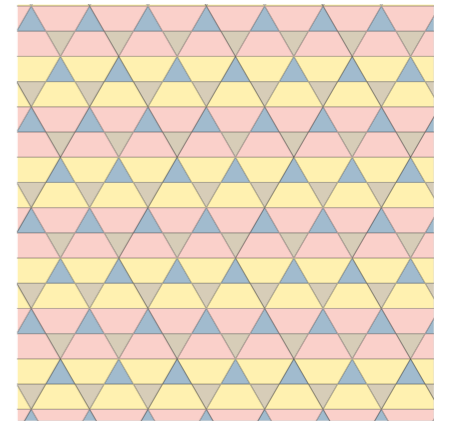
**Honeycomb** 



**Cozy neutrals**  
Milk, Ivory, Craft, Ashes

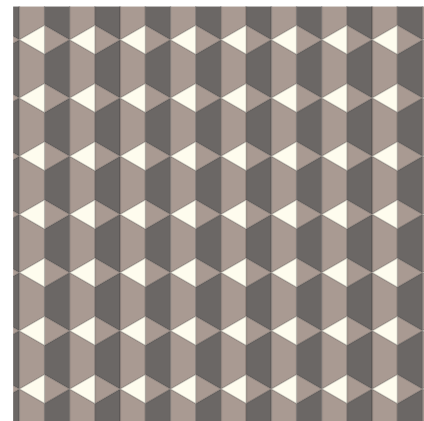


**Deep darks**  
Emerald, Liquorice, Burgundy, Carbon

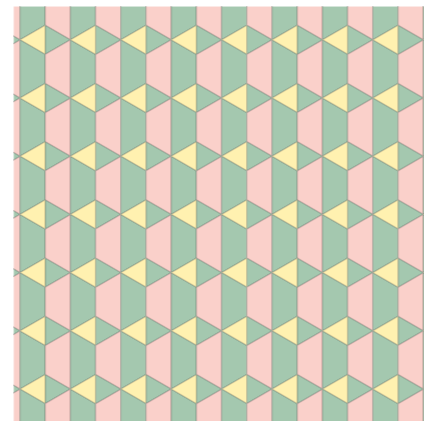


**Tender pastels**  
Banana, Drage, Capuccino, Forget Me Not

**Bow Tie** 

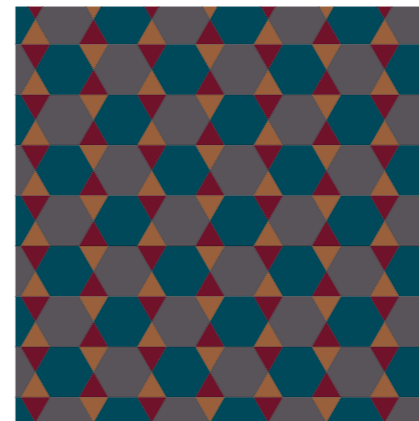


**Cozy neutrals**  
Milk, Ashes, Charcoal

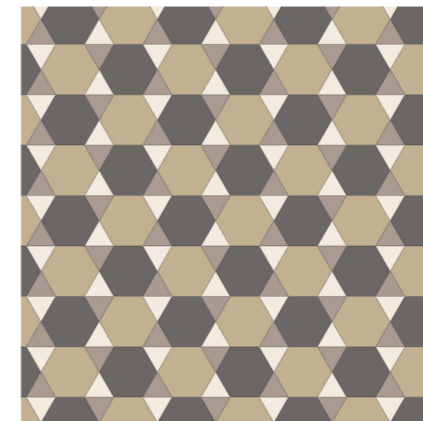


**Tender pastels**  
Banana, Drage, Mint

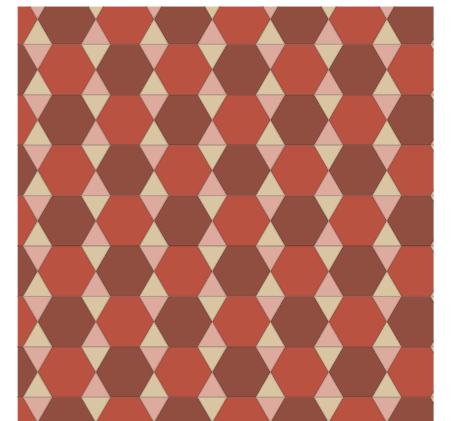
**Garland** 



**Deep darks**  
Emerald, Liquorice, Tobacco, Burgundy



**Cozy neutrals**  
Ivory, Craft, Ashes, Charcoal

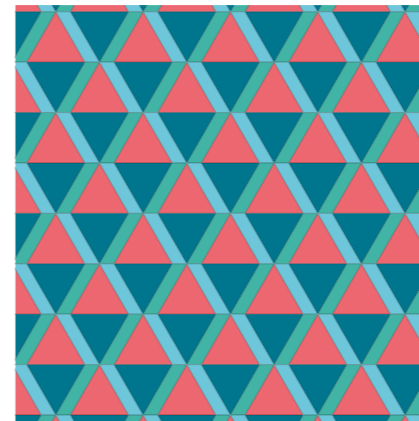
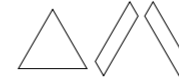


**Spicy warms**  
Dune, Rosewood, Terracotta, Kahlua

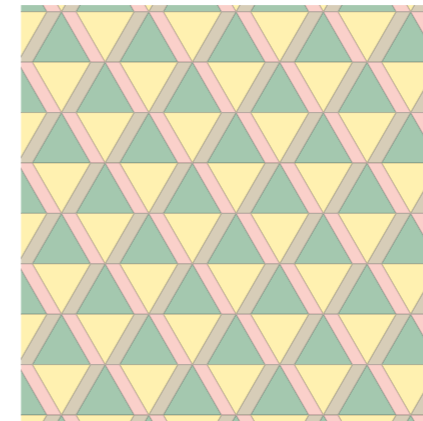


**Cosy neutrals**  
Milk, Ivory, Craft, Ashes

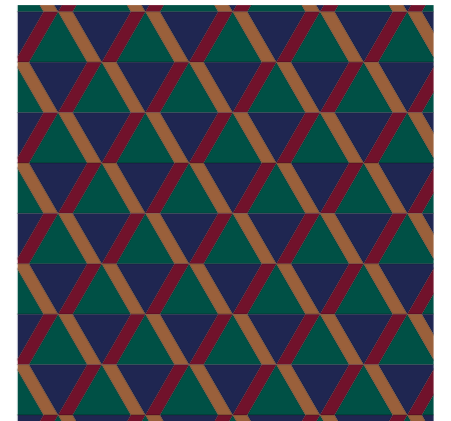
## Club Tie 2



**Bold primaries**  
Poppy, Aqua, Jade, Peacock

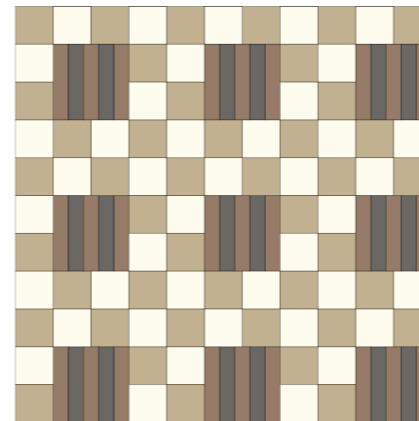


**Tender pastels**  
Banana, Drage, Capuccino, Mint

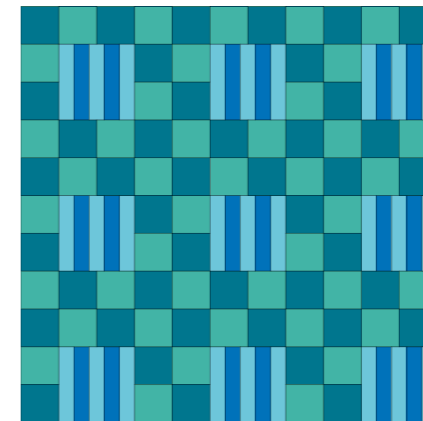


**Deep darks**  
Kensington green, Prussian Blue, Tobacco, Burgundy

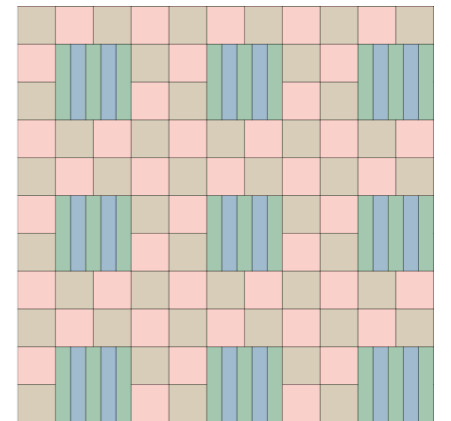
## Allsorts



**Cosy neutrals**  
Milk, Craft, Clay, Charcoal

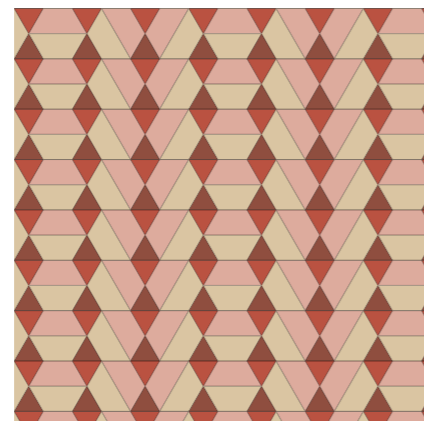
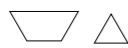


**Bold primaries**  
Aqua, Cobalt, Jade, Peacock

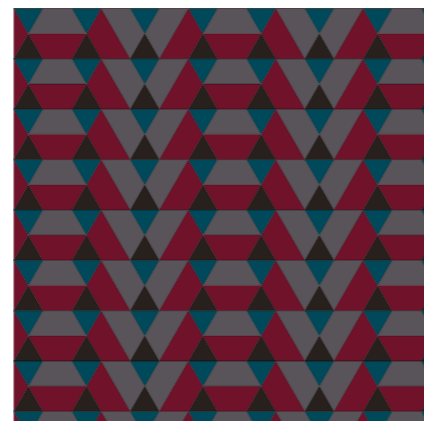


**Tender pastels**  
Drage, Capuccino, Mint, Forget Me Not

## Braids

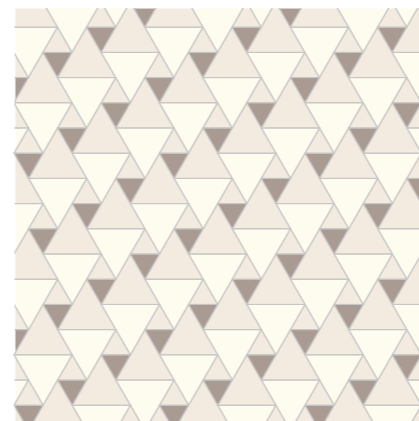


**Spicy warms**  
Rosewood, Dune, Terracotta, Kahlua

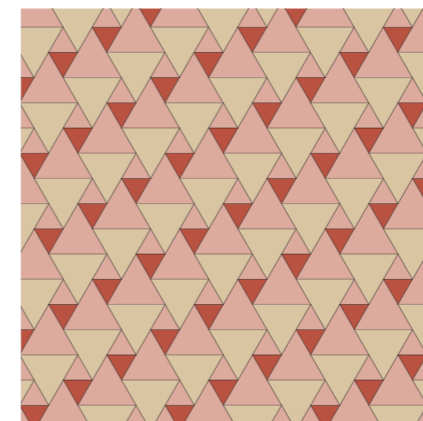


**Deep darks**  
Carbon, Emerald, Burgundy, Liquorice

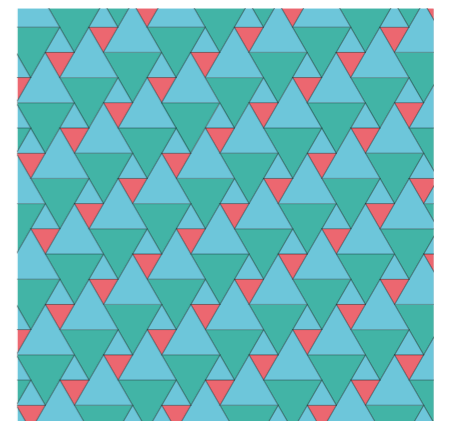
## Birds



**Cosy neutrals**  
Milk, Ivory, Ashes



**Spicy warms**  
Dune, Rosewood, Terracotta



**Bold primaries**  
Poppy, Aqua, Jade

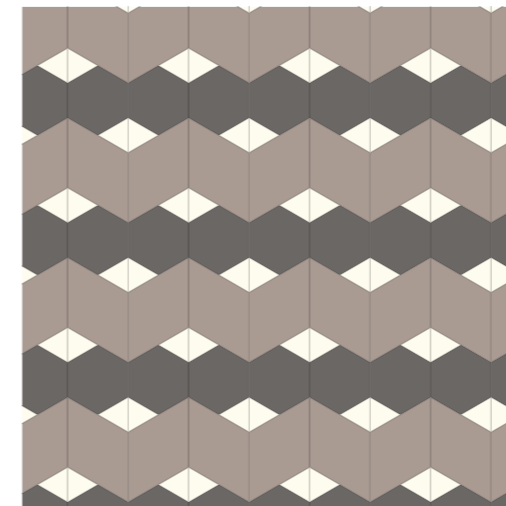
Be the  
maestro and  
play with  
3 shapes  
and more



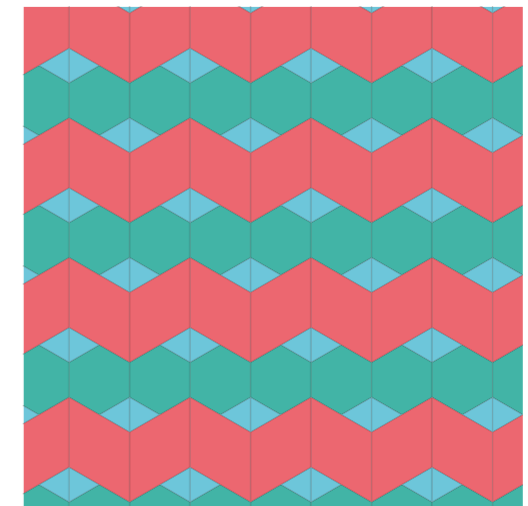
**Cosy neutrals / Tender pastels**  
*Milk / Mint, Forget Me Not*

## Pastel Dream

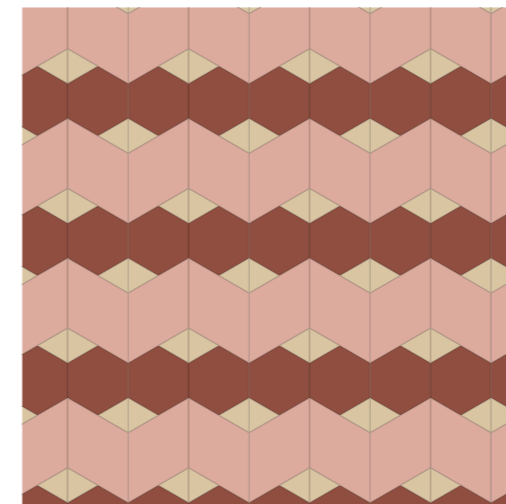
Also available in the 4 other colour harmonies



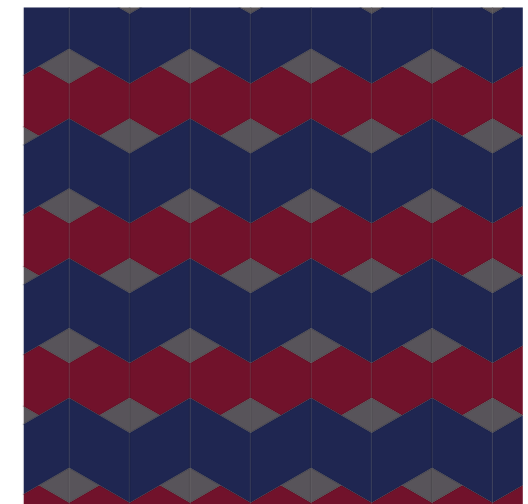
**Cosy neutrals**  
*Milk, Ashes, Charcoal*



**Bold primaries**  
*Poppy, Aqua, Jade*



**Spicy warms**  
*Dune, Rosewood, Kahlua*

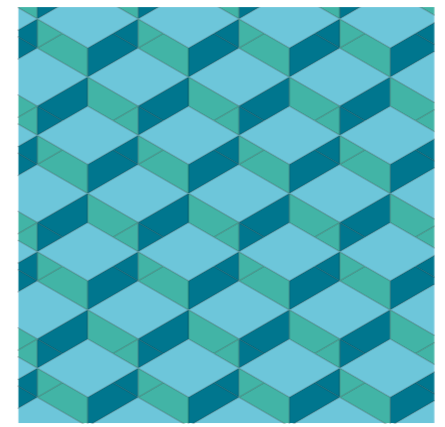


**Deep darks**  
*Liquorice, Prussian Blue, Burgundy*

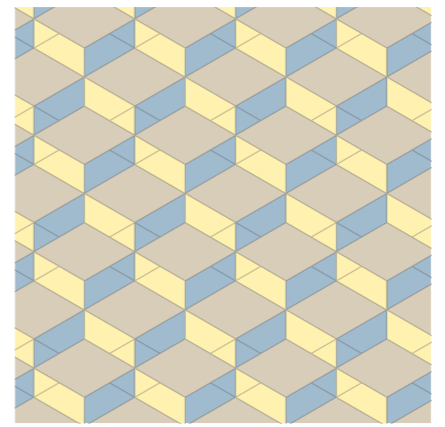


**Tender pastels**  
Banana, Capuccino, Forget Me Not

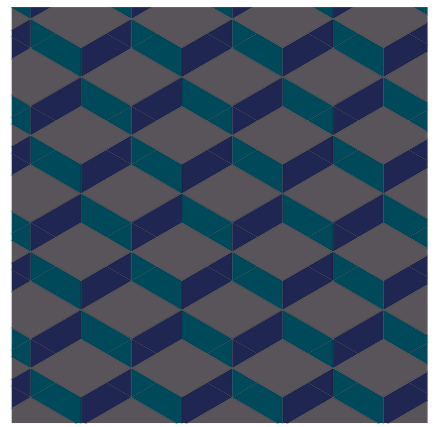
**Up&Down**



**Bold primaries**  
Aqua, Jade, Peacock

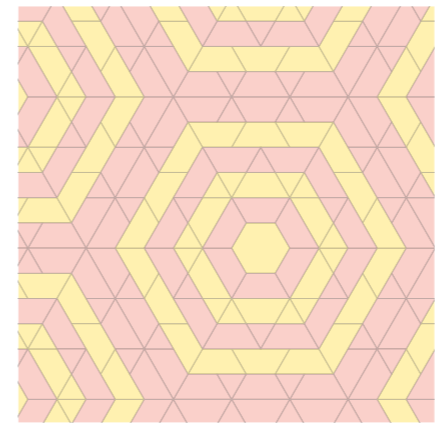


**Tender pastels**  
Banana, Capuccino, Forget Me Not



**Deep darks**  
Emerald, Liquorice, Prussian blue

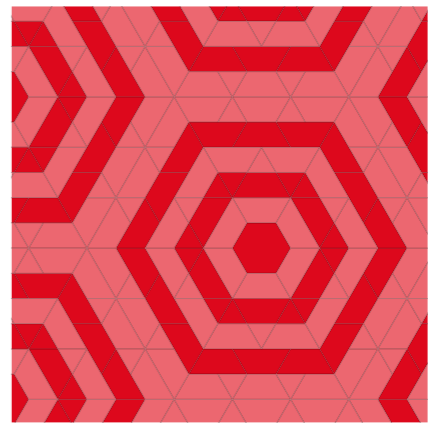
**Vinyl Record**



**Tender pastels**  
Dune, Rosewood

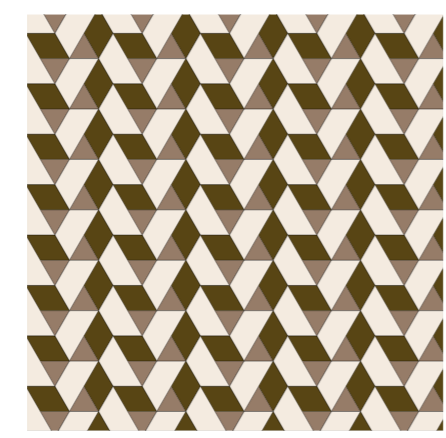


**Cosy neutrals**  
Milk, Charcoal

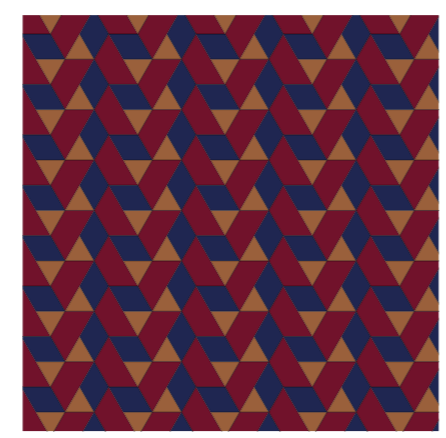


**Bold primaries**  
Strawberry, Poppy

**Fortune teller**



**Cosy neutrals**  
Ivory, Clay, Chestnut

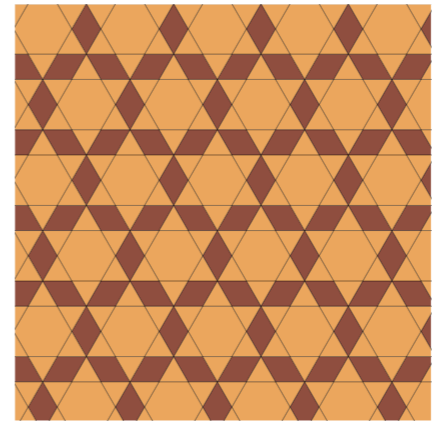


**Deep darks**  
Prussian Blue, Tobacco, Burgundy

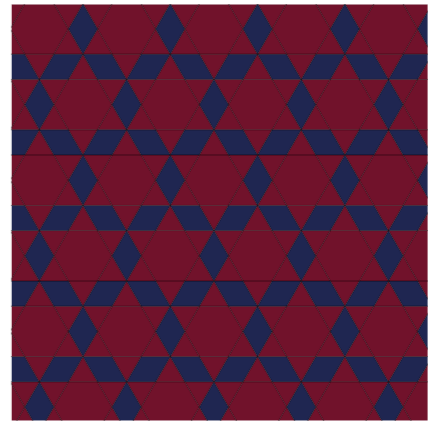
**Sheriff star**



**Cosy neutrals**  
Milk, Charcoal



**Spicy warms**  
Colombo, Kahlua

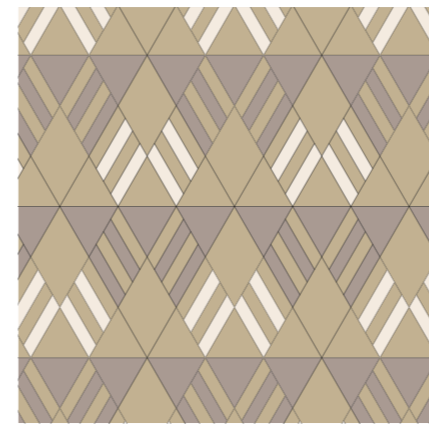


**Deep darks**  
Prussian Blue, Burgundy



**Cosy neutrals**  
Milk, Ivory, Craft

**Aztec**



**Cosy neutrals**  
Milk, Craft, Ashes

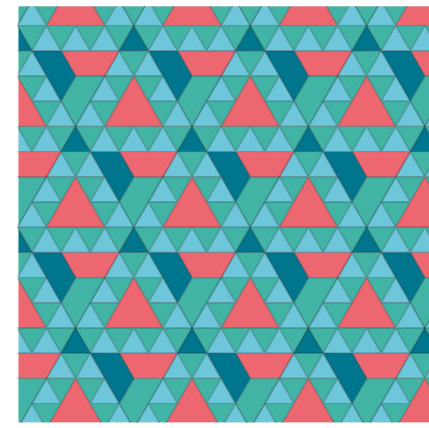


**Bold primaries**  
Poppy, Jade, Peacock

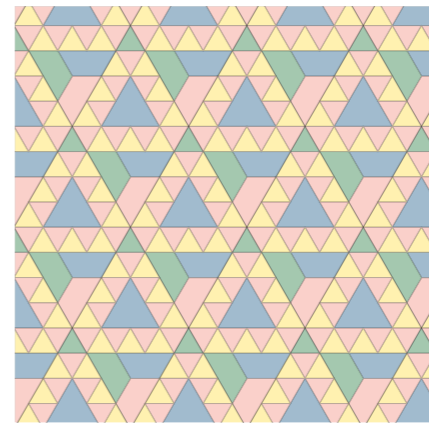


**Deep darks**  
Emerald, Burgundy, Carbon

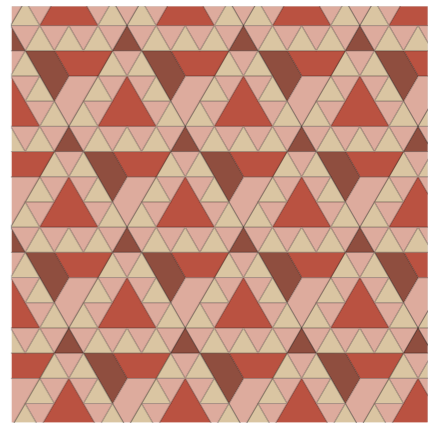
**Prismatic**



**Bold primaries**  
Poppy, Aqua, Jade, Peacock

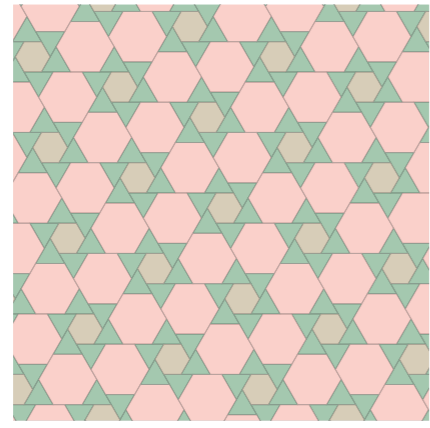


**Tender pastels**  
Banana, Drage, Mint, forget Me Not

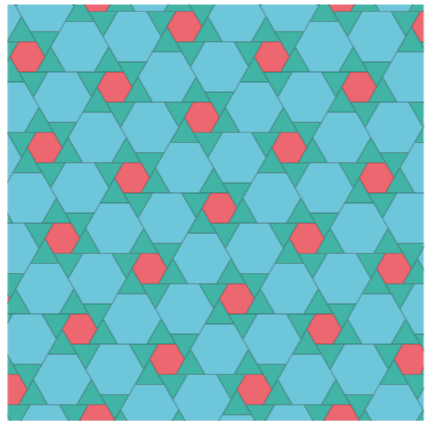


**Spicy warms**  
Dune, Rosewood, Terracotta, Kahlua

**Windmill**



**Tender pastels**  
Drage, Capuccino, Mint

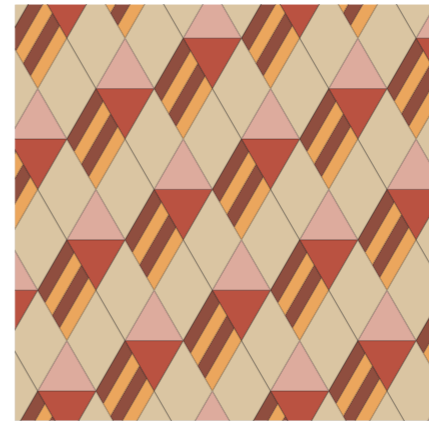


**Bold primaries**  
Poppy, Aqua, Jade

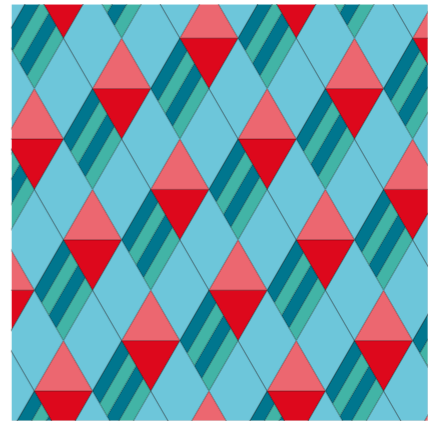
**Vegas strip**



**Deep darks**  
Emerald, Liquorice, Prussian Blue, Burgundy, Carbon



**Spicy warms**  
Dune, Rosewood, Colombo, Terracotta, Kahlua



**Bold primaries**  
Strawberry, Poppy, Aqua, Jade, Peacock



## Doing Good. Together.

At Tarkett, we help you to create healthier spaces by making sustainable flooring that is good for people and good for the environment.

We listen to our customers' needs and collaborate with all our stakeholders to design products that deliver optimal performance, promote healthy living and respect natural resources.



### We are designing for life

People spend 90% of their time indoors, working, learning and relaxing. We help you to create healthier, safer, more peoplefriendly indoor spaces by designing high quality, sustainable products. All Tarkett vinyl products manufactured in the European Union are close to 100% phthalate-free. iD Mixonomi also showcases very low VOC emissions for optimal indoor air quality. Through our focus on Cradle to Cradle® design, we make our products in a way that helps to preserve natural resources and mitigate climate change.



### We are closing the loop

iD Mixonomi contains up to 32% of recycled content and is 100% recyclable. It is eligible to our ReStart® takeback programme. With our ReStart® takeback programme, we help you to manage your flooring waste effectively while contributing to safeguarding the world's natural resources and protecting the environment. We recycle your flooring offcuts and waste from our production, transforming it into new, high quality products. In this way, we can collectively close the loop and shift to a circular economy.



### We're driving collaboration.

The world's great sustainability challenges require co-operation and partnership across industries and supply chains. We encourage our customers and all our stakeholders to join us in working toward positive change. Importantly, we communicate our sustainability progress transparently, and provide you with clear information about our products and ambitions.

## Doing Good. Together.

Every day, we strive to improve people's lives, preserve natural resources and respect our environment.

# HOW CAN I CREATE AND ORDER MY iD MIXONOMI FLOORING ?

iD Mixonomi is a premium modular vinyl collection that is ideal to give rise to ambitious creative projects which combine, with harmony, Colours & Shapes. Here's a summary of the steps to follow to create and order your iD Mixonomi floor.



**1**  
**Explore & experiment** with the collection designs on the ONLINE FLOORING PATTERN DESIGNER

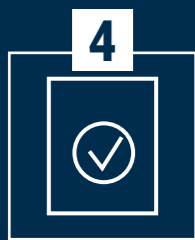


**2**  
**Create**, via our ONLINE FLOORING PATTERN DESIGNER, your Online iD Mixonomi recipe and get product details for a 20m<sup>2</sup> surface



**3**  
**Get in touch** with your local Tarkett point of contact if you wish to receive product samples or to go beyond our suggested recipes\*

\*Please contact your sales representative if you wish to create a bespoke design with our Floorcraft service.



**4**  
Receive your **sample** within 5 days



**5**  
**Place your order**



**6**  
**Receive your iD Mixonomi flooring** (production and shipping within 20 working days)\*

\*Within the working days of the factory



[professionals.tarkett.com/idmixonomi](https://professionals.tarkett.com/idmixonomi)




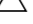
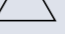


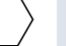



## SPECIFICATION MODEL

The selected flooring similar to iD Mixonomi belongs to the compact vinyl floors category with calandered backing layer made of recycled vinyl. It contains over 30% of recycled material and is made of phthalate-free plasticizers only.

- It is **available in several formats and shapes with no bevels**: Diamond Small (19.243 x 33.329 cm), Diamond Large (66.66 x 38.49 cm), Hexagon Small (20 x 23.1 cm), Hexagon Large (33.33 x 38.49 cm), Trapeze (16.66 x 38.49 cm), Triangle Small (19.24 x 19.24 cm), Triangle Large (38.49 x 38.49 cm), Herringbone (8.33 x 38.49 cm), Square (25 x 25 cm), Rectangle (10 x 50 cm), **multiple shape and format combinations are possible**.
- The wear layer of 0.70mm is **reinforced with a UV photo crosslinked polyurethane including particles of alumina TopClean XP™ treatment**, which permanently suppresses any wax and regenerating polish spray maintenance operations. It has a static indentation resistance  $\leq 0.05$  mm.
- Its **emission rate of volatile organic compounds in air is less than 10  $\mu\text{g} / \text{m}^3$**  (COVT after 28 days). It is **100% recyclable** and installation off-cuts can be collected and recycled through the Tarkett ReStart® program.
- **iD Mixonomi** comes with a **10 Years Warranty**.

If any doubts or clarifications should be needed, please contact your local Tarkett representative for further information.

# PRODUCTS DETAILS

											
	<b>Diamond Large</b> 38.486 x 66.66 cm	<b>Diamond Small</b> 19.243 x 33.329 cm	<b>Triangle Large</b> 38.486 x 38.486 cm	<b>Triangle Small</b> 19.243 x 19.243 cm	<b>Trapeze</b> 16.66 x 38.486 cm	<b>Herringbone Left</b> 8.33 x 38.486 cm	<b>Herringbone Right</b> 8.33 x 38.486 cm	<b>Hexagon Large</b> 33.33 x 38.486 cm	<b>Hexagon Small</b> 20 x 23.094 cm	<b>Square</b> 25 x 25 cm	<b>Rectangle</b> 10 x 50 cm
Milk	24444001	24450001	24443001	24442001	24441001	24445001	24446001	24440001	24447001	24448001	24449001
Ivory	24444002	24450002	24443002	24442002	24441002	24445002	24446002	24440002	24447002	24448002	24449002
Banana	24444003	24450003	24443003	24442003	24441003	24445003	24446003	24440003	24447003	24448003	24449003
Drage	24444004	24450004	24443004	24442004	24441004	24445004	24446004	24440004	24447004	24448004	24449004
Mint	24444005	24450005	24443005	24442005	24441005	24445005	24446005	24440005	24447005	24448005	24449005
Forget Me Not	24444006	24450006	24443006	24442006	24441006	24445006	24446006	24440006	24447006	24448006	24449006
Capuccino	24444007	24450007	24443007	24442007	24441007	24445007	24446007	24440007	24447007	24448007	24449007
Craft	24444008	24450008	24443008	24442008	24441008	24445008	24446008	24440008	24447008	24448008	24449008
Dune	24444009	24450009	24443009	24442009	24441009	24445009	24446009	24440009	24447009	24448009	24449009
Colombo	24444010	24450010	24443010	24442010	24441010	24445010	24446010	24440010	24447010	24448010	24449010
Rosewood	24444011	24450011	24443011	24442011	24441011	24445011	24446011	24440011	24447011	24448011	24449011
Poppy	24444012	24450012	24443012	24442012	24441012	24445012	24446012	24440012	24447012	24448012	24449012
Jade	24444013	24450013	24443013	24442013	24441013	24445013	24446013	24440013	24447013	24448013	24449013
Aqua	24444014	24450014	24443014	24442014	24441014	24445014	24446014	24440014	24447014	24448014	24449014
Ashes	24444015	24450015	24443015	24442015	24441015	24445015	24446015	24440015	24447015	24448015	24449015
Clay	24444016	24450016	24443016	24442016	24441016	24445016	24446016	24440016	24447016	24448016	24449016
Chestnut	24444017	24450017	24443017	24442017	24441017	24445017	24446017	24440017	24447017	24448017	24449017
Ochre	24444018	24450018	24443018	24442018	24441018	24445018	24446018	24440018	24447018	24448018	24449018
Terracotta	24444019	24450019	24443019	24442019	24441019	24445019	24446019	24440019	24447019	24448019	24449019
Strawberry	24444020	24450020	24443020	24442020	24441020	24445020	24446020	24440020	24447020	24448020	24449020
Peacock	24444021	24450021	24443021	24442021	24441021	24445021	24446021	24440021	24447021	24448021	24449021
Cobalt	24444022	24450022	24443022	24442022	24441022	24445022	24446022	24440022	24447022	24448022	24449022
Carbon	24444034	24450034	24443034	24442034	24441034	24445034	24446034	24440034	24447034	24448034	24449034
Charcoal	24444023	24450023	24443023	24442023	24441023	24445023	24446023	24440023	24447023	24448023	24449023
Liquorice	24444024	24450024	24443024	24442024	24441024	24445024	24446024	24440024	24447024	24448024	24449024
Tobacco	24444025	24450025	24443025	24442025	24441025	24445025	24446025	24440025	24447025	24448025	24449025
Kahlua	24444026	24450026	24443026	24442026	24441026	24445026	24446026	24440026	24447026	24448026	24449026
Burgundy	24444027	24450027	24443027	24442027	24441027	24445027	24446027	24440027	24447027	24448027	24449027
Emerald	24444028	24450028	24443028	24442028	24441028	24445028	24446028	24440028	24447028	24448028	24449028
Kensington Green	24444029	24450029	24443029	24442029	24441029	24445029	24446029	24440029	24447029	24448029	24449029
Prussian Blue	24444030	24450030	24443030	24442030	24441030	24445030	24446030	24440030	24447030	24448030	24449030
Copper	24544031	24539031	24543031	24542031	24541031	24545031	24546031	24540031	24547031	24548031	24549031
Brass	24544032	24539032	24543032	24542032	24541032	24545032	24546032	24540032	24547032	24548032	24549032
Silver	24544033	24539033	24543033	24542033	24541033	24545033	24546033	24540033	24547033	24548033	24549033

# TECHNICAL DATA SHEET

Certification & classification	Standards	iD Mixonomi
Type of floor covering	EN ISO 10582	Heterogeneous Compact Resilient Floorcovering
Classification	EN ISO 10874	Domestic: 23 Commercial: 34 Industrial: 43
<b>Technical characteristics</b>		
Total thickness	EN ISO 24346	2.5 mm
Wear layer thickness	EN ISO 24340	0.7 mm
Total weight	EN ISO 23997	3950 g/m <sup>2</sup>
Wear layer binder content	EN ISO 10582	Type I
Dimensions	EN ISO 24342	Diamond Small 19.243 x 33.329 cm, 80 units/box = 2.56 m <sup>2</sup> Diamond Large 38.486 x 66.66 cm, 20 units/box = 2.56 m <sup>2</sup> Herringbone Left 8.33 x 38.486 cm, 80 units/box = 2.56 m <sup>2</sup> Herringbone Right 8.33 x 38.486 cm, 80 units/box = 2.56 m <sup>2</sup> Hexagon Small 20 x 23.094 cm, 60 units/box = 2.04 m <sup>2</sup> Hexagon Large 33.33 x 38.486 cm, 20 units/box = 1.92 m <sup>2</sup> Rectangle 10 x 50 cm, 75 units/box = 3.75 m <sup>2</sup> Square 25 x 25 cm, 60 units/box = 3.75 m <sup>2</sup> Trapeze 16.66 x 38.486 cm, 40 units/box = 1.92 m <sup>2</sup> Triangle Small 19.243 x 19.243 cm, 120 units/box = 1.92 m <sup>2</sup> Triangle Large 38.486 x 38.486 cm, 40 units/box = 2.56 m <sup>2</sup>
Surface treatment (PUR)		Yes - TopCleanXP™
Beveled edges		No
<b>Technical performances</b>		
Dimensional stability	EN ISO 23999	≤ 0.10 %
Curl resultant to heat	EN ISO 23999	≤ 2 mm
Reaction to fire	EN 13501-1	B <sub>f1</sub> -s1 glued over concrete substrate B <sub>f1</sub> -s1 glued over wood substrate
Residual indentation	EN ISO 24343-1	≤ 0.05 mm
Furniture leg	EN 424	No damage
Castor chair	ISO 4918 - EN 425	No damage
Impact sound reduction	EN ISO 717-2	ΔL <sub>w</sub> = 2 dB
Reduction of in-room impact noise	EN ISO 31-074	Class C (L <sub>n,eq,w</sub> < 85 dB)
Thermal resistance	EN ISO 10456	0,02 m <sup>2</sup> K/W
Light fastness	EN ISO 105-B02 (method 3a)	≥ 6
Chemical resistance	EN ISO 26987	Very good
Slip resistance	DIN 51130 EN 13893	R10 μ ≥ 0.30
Electrical properties	EN 1815 EN 1081	<2 kV on concrete > 10 <sup>9</sup> Ohm
Peeling resistance	EN ISO 24345	≥ 50N / 50mm
Underfloor heating		Suitable - max. 27 °C
<b>Environmental tag</b>		
VOC emission	ISO 16000-9	≤ 10 μg/m <sup>3</sup>
Recycled content	-	32%
Recyclable	-	100%
Plasticizer	-	Phtalate-free

The above information is subject to modification for the benefit of further improvement. (11/18).  
Tarkett's instructions regarding installation, cleaning and maintenance should be observed.  
Please contact Tarkett at the address shown for these instructions.

CUSTOMS TARIFF : 4820 5000 00





■ **WESTERN EUROPE:** Austria: Tarkett Holding GmbH, Niederlassung Wien – Tel. +43 1 47 88 062 ■ Belgium: Tarkett Belux Sprl – Tel. +32 16 35 98 80 ■ Denmark: Tarkett A/S – Tel. +45 43 90 60 11 ■ Finland: Tarkett Oy – Tel. +358 9 4257 9000 ■ France: Tarkett SAS – Tel. +33 1 41 20 42 49 ■ Germany: Tarkett Holding GmbH – Tel. +49 62 33 810 ■ Greece: Tarkett Monoprosopi Ltd – Tel. +30 210 6745 340 ■ Italy: Tarkett S.p.A. – Tel. +39 0744 7551 ■ Luxembourg: Tarkett GDL SA – Tel. +352 949 211 8804 ■ Netherlands: Tarkett BV – Tel. +31 416 685 491 ■ Norway: Tarkett AS – Tel. +47 32 20 92 00 ■ Portugal: Tarkett SA – Tel. +351 21 427 64 20 ■ Spain: Tarkett Floors S.L. – Tel. +34 91 358 00 35 ■ Sweden: Tarkett Sverige AB – Tel. +46 771 25 19 00 ■ Switzerland: Tarkett Holding GmbH – Tel. +41 043 233 79 24 ■ Turkey: Tarkett Aspen – Tel. +90 212 213 65 80 ■ United Kingdom: Tarkett Ltd – Tel. +44 (0) 1622 854 040 ■ **EASTERN EUROPE:** Baltic Countries: Tarkett Baltics: Tel. +370 37 262 220 ■ Czech Republic: Tarkett org. s.r.o. – Tel. +420 271 001 600 ■ Hungary: Tarkett Polska SP Z.O.O. magyarországi fioktelepe – Tel. +36 1 437 8150 ■ Poland: Tarkett Polska Sp. z o.o. – Tel. +48 22 16 09 231 ■ Russian Federation: ZAO Tarkett RUS – Tel. +7 495 775 3737 ■ Slovakia: Tarkett Polska, organizačná zložka – Tel. +421 2 48291 317 ■ South East Europe: Tarkett SEE – Tel. +381 21 7557 649 (44) 569 12 21 ■ Ukraine: Tarkett UA – Tel. +38 (0) 44 569 12 21 ■ **ASIA AND OCEANIA:** Australia: Tarkett Australia Pty Ltd – Tel. +61 2 88 53 12 00 ■ China: Tarkett Floor Covering (Shanghai) Co. Ltd. – Tel. +86 (21) 60 95 68 38 ext 841 ■ North East Asia: Tarkett Hong Kong Limited – Tel. +852 2511 8716 ■ India: Tarkett Flooring India Pvt. Ltd. – Bangalore – Tel. +91 80 4130 3793 – New Delhi – Tel. +91 11 4352 4073 – Mumbai – Tel. +91 22 2648 8750 ■ South East Asia: Tarkett Flooring Singapore Pte. Ltd. – Tel. +65 6346 1585 ■ **AFRICA:** Tarkett International: Tel. +33 1 41 20 41 01 ■ **MIDDLE EAST:** Tarkett Middle East: Tel. +961 1 51 3363/4 ■ Israel: Tarkett International: Tel. +33 1 41 20 41 01 ■ **NORTH AMERICA:** USA: Tarkett Inc. – Tel. +1 713 869 5811 / Johnsonite – Tel. +1 440 543 8916 ■ Canada: Tarkett Inc. – Tel. +1 450 293 173 ■ **LATIN AMERICA:** Brazil: Tarkett – Tel. 55 12 3954 7108 ■ Argentina - Chile - Uruguay: Tarkett Latam Mercosur - Tel. +54 11 47 08 07 72 / +54 9 11 44 46 88 82 ■ Bolivia - Colombia - Ecuador - Panama - Paraguay - Peru - Trinidad and Tobago - Venezuela: Tarkett - Tel. +55 11 98410 9310 / +55 11 95494 0069 ■ Mexico / Central America: Tarkett Latam Mexico - Tel. +55 11 98410 9310

The designs and photos used in this brochure are for illustration purposes only. They are not contractual images and do not stand for product recommendation. Design: Gecco / Photo: Getty images / Print: Lamazière

[www.professionals.tarkett.com](http://www.professionals.tarkett.com)



 **Tarkett**